



breakfast for village renewers

6. August 2025, 8:30 bis 10:00 Uhr
Wiet van Meel

2011

Decision close Church Esbeek

Local challenge repurposing the Church

2019

Opening school in church



De Kempen



Time schedule

- 2011 News : closing church
- 2012 Start proces oriëntation repurposing church
Local government does not participate
- 2013 Church closed
- 2016 Decision : School in church; private funding & exploitation
- 2017 Decision : Local government takes over funding&exploitation
- 2018 Buildingproces
- 2019 Opening

Challenges

- Feasibility Study

Conclusion : maintain Esbeek's liveability by realising broad school concept in church

- Finance

Plan development : subsidies & volunteers 200 Keuro

Acquisition church under acceptable conditions 225 Keuro

Financial viability:; exploitation per year 100 Keuro

Investment partner: first private, then municipality investment 2.900 Keuro

- Societal support

Physical : Fit within spatial program, usage costs, rental agreements

Energy reduction

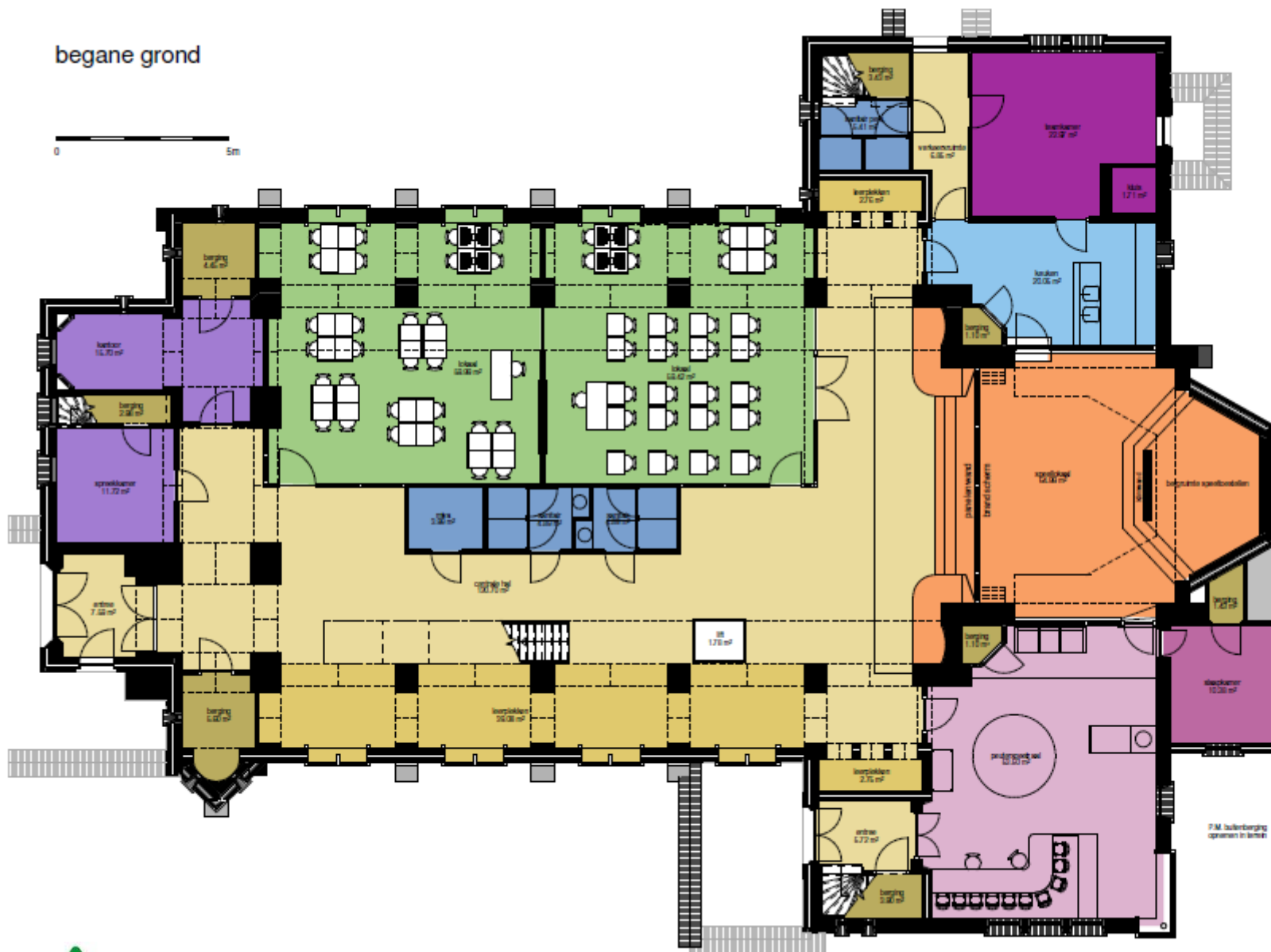
Regulations and school & after school-care funding

Spatial planning, heritage, permits

Social : Community support in Esbeek and Hilvarenbeek

Political : Support from municipality: board, civil service, council





heilige adrianus, esbeek

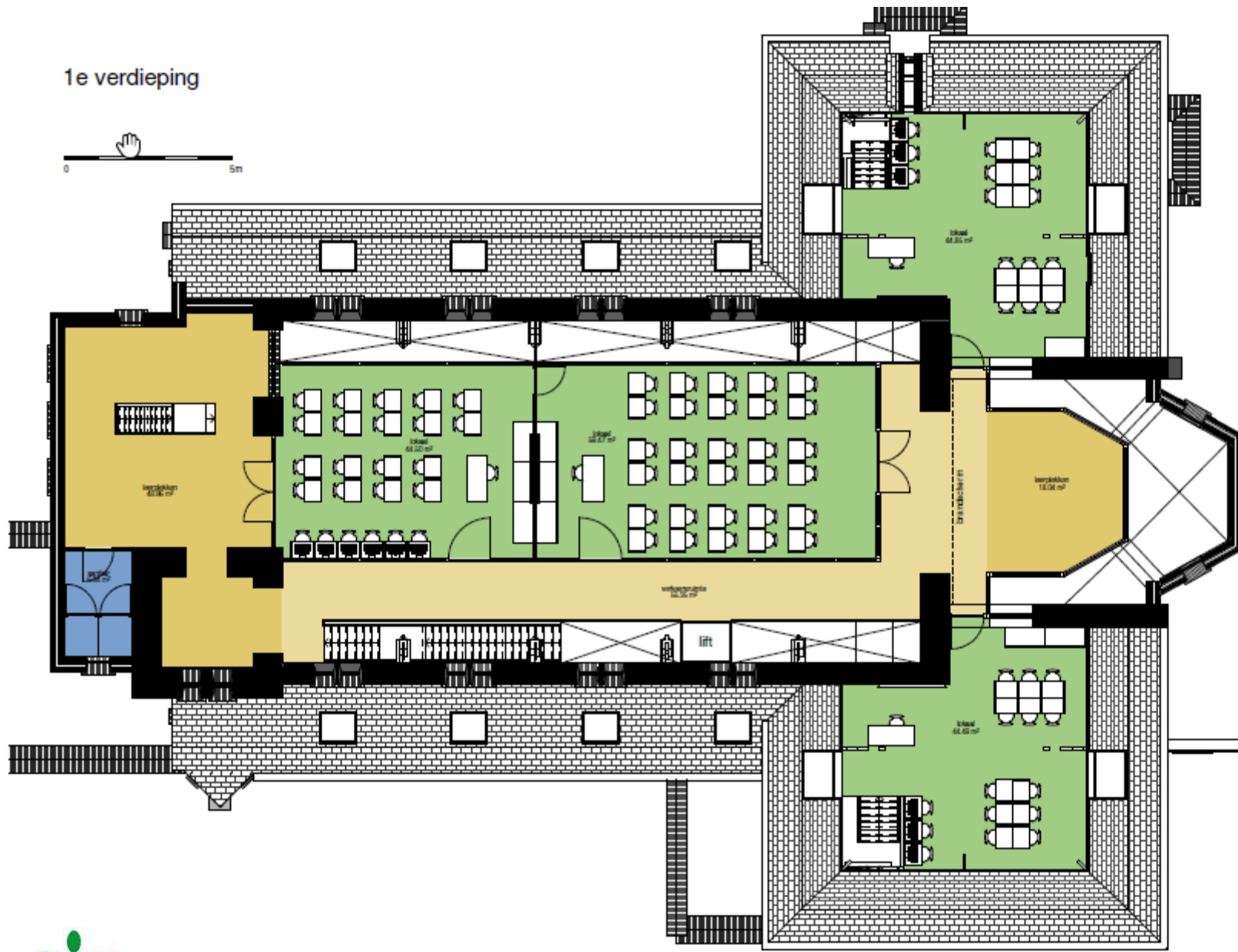
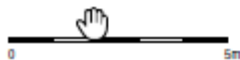
luijten	ismaelers	architecten	wilhelmipark 11	5041ea	tubing
-------------------------	---------------------------	-----------------------------	---------------------------------	------------------------	------------------------

1.0135360500 1.0135359981

© copyright all rights reserved 2002. wjzhen's meidens |architecten, tiling

www.Juitten-smeulders.nl

12.250 | HO | 156 | 02.02.2017



heilige adrianus, esbeek

Wijster | smeynders | architecten | wilhelminapark 11 | 5041ba tilburg

1.013 5060530 1.0135359961

www.juitten-smaulders.nl

12.250 | HO | 158 | 02.02.2017

© copyright all rights reserved 2002 kujien(a)modders[architects].tibung

Process Facilitation

- Feasibility study
- Sustainability aspects. Viability.
- Users, fit, acquisition
- Investment, financing, exploitation
- Communication
- Local or external funding and exploitation

Success conditions participation :

- Define your goal
- Keep it small and smart
- Manage expectations
- Be proactive and positive
- Be good and tell it
- Build networks
- Mobilize people and knowledge
- Show and celebrate results

Success attracts attention

Generate & use Publicity

- 8 YouTube videos
- 10 newspaper articles
- 3 TV recordings
- 2 radio programs
- 1 full week of radio coverage

Pride

- The visit of the King
- Mentioned in national Christmas speech by His Majesty
- Mentioned in New Year's address King's Commissioner

De Esbeekse jeugd weer terug in de kerk



Esbeekse kerk moet in 2017 veranderen in een brede school. Dorp zelf gaat weer aan de slag.

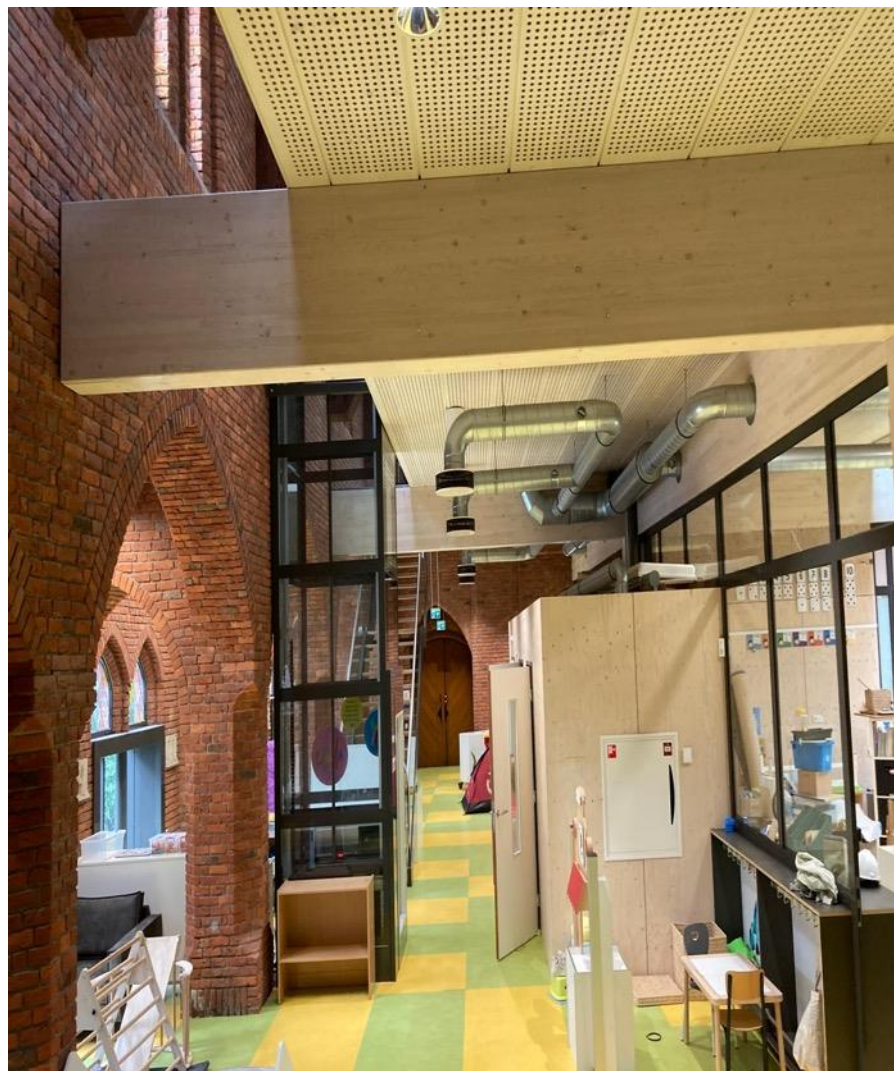
Van West- naar Oost-Esbeek
De kerk van Esbeek staat op een plek waar vroeger een kerk stond. De kerk van Esbeek staat op een plek waar vroeger een kerk stond. De kerk van Esbeek staat op een plek waar vroeger een kerk stond.



Metamorfose kerk compleet
Een mijpaal in de ombouw van de Esbeekse kerk. Het onderwijspaviljoen is nu compleet overhandigd. De bouw van de kerk is nu compleet overhandigd.







Additional info

Minor Week HBO Students – Avans Lector Day

- Study ambition: “Europe’s most sustainable heritage building”
- Event: Intervision Rural Alliances
- Preliminary Study: Integrated Approach

Light, Air and Sound Central

Energy = essential precondition

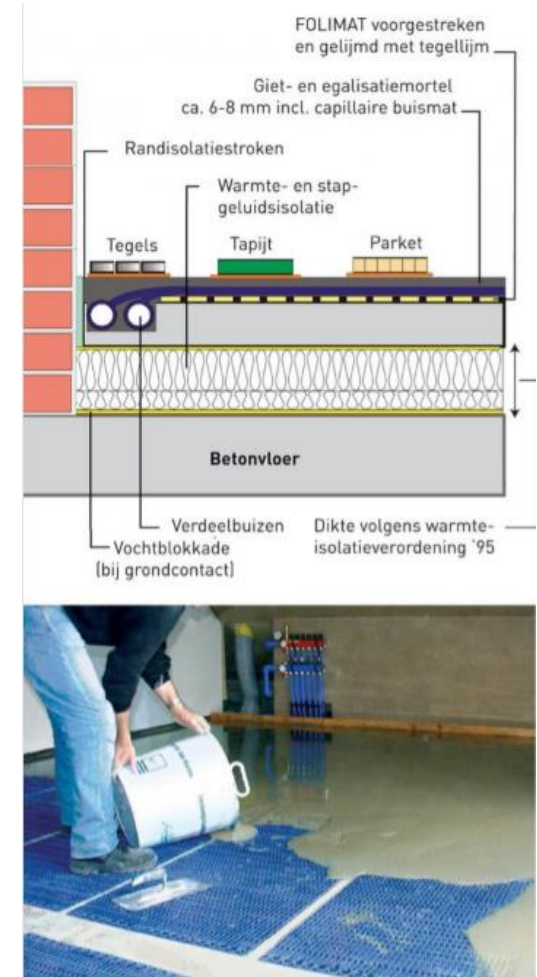
Search for the right system

Involving expertise



European Subsidy: Innovative Energy System

- Interreg Flanders-Netherlands
- 60kW air-to-water heat pump
- PV panels + solar distribution on Schuttershof
- Revenue sharing - Schuttershof
- Underfloor heating: capillary mats
- Solartubes
- Roof insulation + stretch ceilings
- Innovative control systems



Societal Project Development

- Explore subsidy landscape
- Provincial: Cultural heritage, monument, cofinancing
- European: Interreg, energy innovation, POP3
- Other: Nationalfunds.nl, crowdfunding (external or Esbeek members)

Subsidy Management

	Key Partners	Intended Funding for Process	Intended Funding for Physical
Preparation	Cooperative etc.	Subsidy: Leader Plus + Cooperative budget	
Feasibility Study	Users, Parish Board, Cooperative, Municipality, Diocese, External parties	1) Provincial Cultural Heritage Subsidy Scheme 2) Municipal contribution 3) Cooperative / own efforts	
Acquisition	Negotiation Parish Board, Cooperative, Diocese	1) Cooperative 2) Parish	
Energy Performance	Research / Innovation / Implementation Technical Bureau, Architect, Knowledge Institute, Avans??	European (applied): • Interreg • National?	European: • Interreg
Implementation	Preparation: Architect, consultants	European (applied): • Interreg Energy • National?	
	Restoration part: Contractor(s)/consultants	Province (applied)	Province? Cultural heritage
	Interior build for new function: same	European (applied): • Interreg / craftsmanship • Funds?	
Exploitation	School, preschool, Mikz, Cooperative etc.		Cost bearer: tenants Social investor: Municipality? Corporation? Cooperative? Third party?